

# Da Vinci X

Expand your  
potential.



INTUITIVE



# Expand your potential

As a cost-effective gateway to the fourth generation of da Vinci surgical systems, the da Vinci X can grow with your robotics program as you perform innovative minimally invasive surgery for your patients.

Designed so you can comfortably perform a range of procedures, this system provides visual guidance during setup, a linear port placement, and a smaller, thinner arm design. This enables a broader reach than previous generations of da Vinci systems.<sup>1</sup>

Plus, you can use much of the same advanced technology available for our most capable platform, the da Vinci Xi surgical system, making upgrades straightforward if your needs evolve.

# Build on a solid foundation

Intuitive created the da Vinci X surgical system by using experience from three previous generations and thousands of hours working with surgeons and staff. Now the benefits of robotic-assisted surgery can be brought to any operating room at a lower price.<sup>2</sup>

## Set up quickly

Follow a clear interface as you set up, and utilize a laser guidance system that helps take the guesswork out of positioning the patient cart.

## Simplify port placement

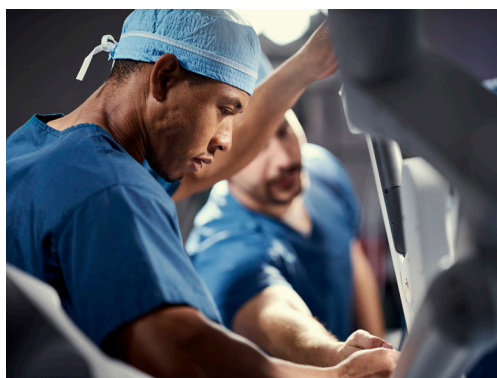
The architecture of the fourth-generation instrument arms allows ports to be placed in a straight line for multi-port procedures.

## Switch your view

A universal arm design allows you to insert the endoscope on any arm at any time during your procedure.

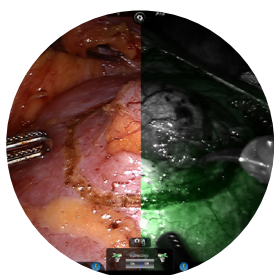
## Get a greater range of motion<sup>1</sup>

By combining longer instruments with thinner arms<sup>1</sup>, the da Vinci X surgical system can help limit the potential for collision while focusing on precision.



# Access the latest da Vinci innovations

Choosing the da Vinci X surgical system means you can use the same instruments available for the da Vinci Xi, enabling you to standardize instruments for your multi-port patient carts.



## See tissue in a different light

Built-in Firefly fluorescence imaging gives you real-time visualization and assessment of vessels, bile ducts, and tissue perfusion.



## Put the power in your hands

The integrated ERBE VIO dV generator helps you fine-tune energy output and switch presets when you need to directly from the surgeon console.



## Staple with control

Da Vinci Stapling offers a full range of lengths and reloads—30, 45, and 60 mm—as well as fully wristed articulation, complete surgeon control from the console, and software-driven feedback to help reduce guesswork.



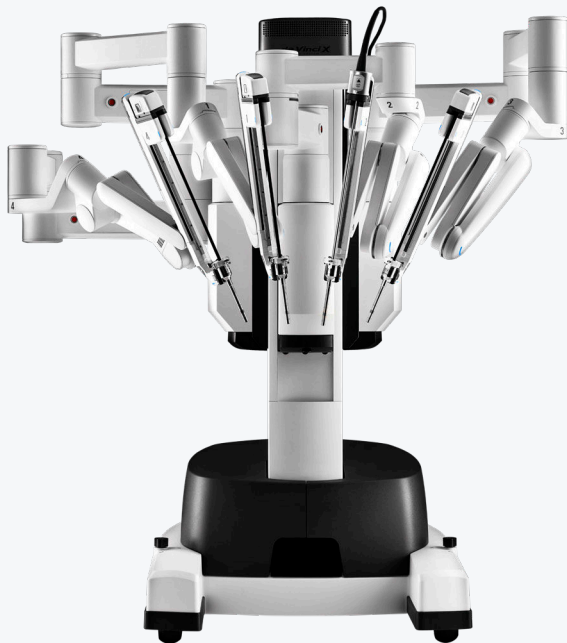
## Get two grip strengths in one grasper

Force Bipolar with DualGrip technology can help streamline setup and minimize workflow disruptions by reducing instrument exchanges.



# Upgrade when you are ready

Powered by da Vinci OS4, the fourth generation of da Vinci surgical systems allows flexible configurations and an upgrade path as your program needs evolve, whether you are switching to the da Vinci Xi or adding future technologies.



Da Vinci X patient cart



Da Vinci Xi patient cart



Surgeon console



Vision cart

# System comparison

Da Vinci X



Da Vinci Xi



## Core technology

Da Vinci OS4 compatible  
Intuitive motion  
EndoWrist technology  
Immersive 3DHD stereo viewer  
Upgradeable architecture



## Technology enhancements<sup>1</sup>

Dual console compatible  
Single-Site technology  
Vessel Sealer Extend  
Firefly Fluorescence Imaging  
Multi-Port instruments and endoscope  
Integrated energy  
Da Vinci stapling portfolio  
Platform modularity  
Handheld camera  
Endoscope Plus



## Capability enhancements<sup>1</sup>

Streamlined port placement  
Extended anatomical access  
Integrated Table Motion  
Boom rotation



## Ease of use enhancements<sup>1</sup>

Automated setup tasks  
Advanced intraoperative adjustments  
Universal cart positioning  
Optimized patient side access



# Purchasing information

## Da Vinci X system

To contact a representative or  
receive additional information visit:  
[www.intuitive.com](http://www.intuitive.com)

or

call Intuitive Customer Service in Europe at:

+41.21.821.2020 or  
+800.0821.2020 (toll free)



---

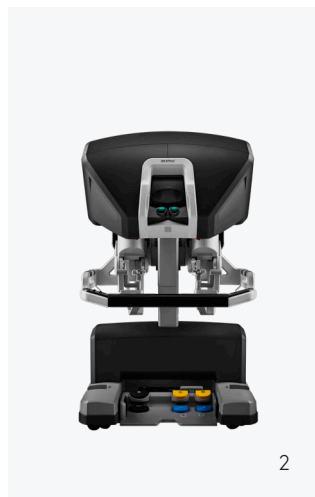
## What you get<sup>3</sup>

The da Vinci X system has three components:

1. A unique **patient cart**

2. A **surgeon console** providing an  
immersive, ergonomic experience

3. A **vision cart** supporting the latest  
3DHD vision system



## Important safety information

Serious complications may occur in any surgery, including da Vinci Surgery, up to and including death. Examples of serious or life-threatening complications, which may require prolonged and/or unexpected hospitalization and/or reoperation, include but are not limited to, one or more of the following: injury to tissues/organs, bleeding, infection and internal scarring that can cause long-lasting dysfunction/pain.

Risks specific to minimally invasive surgery, including da Vinci surgery, include but are not limited to, one or more of the following: temporary pain/nerve injury associated with positioning; a longer operative time, the need to convert to an open approach, or the need for additional or larger incision sites. Converting the procedure could result in a longer operative time, a longer time under anesthesia, and could lead to increased complications. Contraindications applicable to the use of conventional endoscopic instruments also apply to the use of all da Vinci instruments.

For Important Safety Information, indications for use, risks, full cautions and warnings, please also refer to [www.intuitive.com/safety](http://www.intuitive.com/safety).

Individuals' outcomes may depend on a number of factors, including but not limited to patient characteristics, disease characteristics and/or surgeon experience.

## Da Vinci Surgical Systems

The Intuitive Surgical Endoscopic Instrument Control Systems (da Vinci X, da Vinci Xi and da Vinci Si surgical systems) are intended to assist in the accurate control of Intuitive Surgical Endoscopic Instruments during urologic surgical procedures, general laparoscopic surgical procedures, gynecologic laparoscopic surgical procedures, general thoracoscopic surgical procedures, thoracoscopically-assisted cardiomy procedures, and trans-oral otolaryngology surgical procedures restricted to benign tumors and malignant tumors classified as T1 and T2, and for benign base of tongue resection procedures. The systems can also be employed with adjunctive mediastinotomy to perform coronary anastomosis during cardiac revascularization. The systems are indicated for adult and pediatric use (except for trans-oral otolaryngology surgical procedures). They are intended to be used by trained physicians in an operating room environment.

The da Vinci X, da Vinci Xi and da Vinci Si surgical systems are class IIb medical devices CE marked

(CE0543) under the European Medical Devices Directive (93/42/EEC), manufactured by Intuitive Surgical, Inc. Refer to Instructions For Use before use.

## Firefly Fluorescence Imaging

The da Vinci Firefly imaging system is intended to provide real-time endoscopic visible and near-infrared fluorescence imaging. The da Vinci Firefly imaging system enables surgeons to perform minimally invasive surgery using standard endoscopic visible light as well as visual assessment of vessels, blood flow and related tissue perfusion, and at least one of the major extra-hepatic bile ducts (cystic duct, common bile duct or common hepatic duct), using near infrared imaging.

## Table motion

The da Vinci table motion is intended to allow the surgical staff to reposition the patient by adjusting the table without undocking the da Vinci Xi surgical system during urologic surgical procedures, general laparoscopic surgical procedures, and gynecologic surgical procedures. It is designed to be used with a compatible operating room (OR) table.

## Stapler family

The EndoWrist Stapler 45 and Stapler 30 instruments, Stapler 45 and Stapler 30 reloads and other stapler accessories are intended to be used with the da Vinci X and da Vinci Xi surgical systems for resection, transection and/or creation of anastomoses in general, thoracic, gynecologic and urologic surgery. The devices can be used with staple line or tissue buttressing material (natural or synthetic).

The EndoWrist Stapler 45 and Stapler 30 instruments, Stapler 45 and Stapler 30 reloads and other stapler accessories are class Is, IIa and IIb medical devices CE marked (CE0543) under the European Medical Devices Directive (93/42/EEC), manufactured by Intuitive Surgical, Inc. Refer to Instructions For Use before use.

## SureForm staplers

The SureForm 60 and SureForm 45, SureForm 60 and SureForm 45 reloads are intended to be used with a compatible da Vinci surgical system for resection, transection, and, or creation of anastomoses in general, thoracic, gynecologic, urologic, and pediatric surgery. The devices can be used with staple line or tissue buttressing material (natural or synthetic).

The SureForm 60 and SureForm 45, SureForm 60 and SureForm 45 reloads are class IIa and IIb medical devices CE marked (CE0543) under the European

Medical Devices Directive (93/42/EEC), manufactured by Intuitive Surgical, Inc. Refer to Instructions For Use before use.

### Force Bipolar

The EndoWrist Force Bipolar is intended to be used with compatible systems for endoscopic manipulation of tissue, including dissection, grasping, retraction, and bipolar coagulation of tissue.

The EndoWrist Force Bipolar is a class IIb medical device CE marked (CE0543) under the European Medical Devices Directive (93/42/EEC) manufactured by Intuitive Surgical, Inc. Refer to Instructions For Use before use.

### Single-Site

The Single-Site instruments and accessories are intended for use with the da Vinci X and da Vinci Xi surgical systems to enable multiple instruments in conjunction with the Single-Site Port accessory for use in single incision laparoscopic abdominal surgery.

The Single-Site instruments and accessories are class IIa and IIb medical devices CE0543 marked under the European Medical Device Directive (93/42/EEC), and manufactured by Intuitive Surgical, Inc. Refer to Instructions For Use before use.

### Vessel Sealer Extend

The Vessel Sealer Extend is a bipolar electro-surgical sealing and cutting instruments for use with the da Vinci Xi and da Vinci X surgical systems and the ERBE VIO dV electro-surgical generator. It is intended for grasping and blunt dissection of tissue and for bipolar coagulation and mechanical transection

of vessels up to 7 mm in diameter and tissue bundles that fit in the jaws of the instrument. The Vessel Sealer Extend has not been shown to be effective for tubal sterilization or tubal coagulation for sterilization procedures, and should not be used for these procedures.

The Vessel Sealer Extend is class IIb medical devices CE marked (CE0543) under the European Medical Devices Directive (93/42/EEC), manufactured by Intuitive Surgical, Inc. Refer to Instructions For Use before use.

### ERBE VIO dV

The ERBE VIO dV with accessories electro-surgical unit is intended to deliver High Frequency (HF) current for the cutting and/or coagulation of tissue.

The ERBE VIO dV is a class IIb medical device CE marked (CE 0124) under the European Medical Devices Directive (93/42/EEC) manufactured by ERBE Elektromedizin GmbH. Refer to Instructions For Use before use.

Unless otherwise noted, all people depicted are models.

### References

1. Compared to the da Vinci Si surgical system. Results of testing on file.
2. Lower price refers to initial expenditure on surgical system.
3. Parts of the da Vinci X surgical system may be refurbished or reconditioned.

PN1064689-EU RevB 05/2020

### European regional offices

#### European headquarters (Switzerland)

Intuitive Surgical Sàrl  
1, chemin des Mûriers  
1170 Aubonne, Suisse  
Tel: +41 21 821 2000  
Fax: +41 21 821 2001  
VAT #: CHE-113.407.162 VAT

#### Germany

Intuitive Surgical Deutschland GmbH  
Am Flughafen 6  
79108 Freiburg, DE  
MWST #: DE200038727  
Amtsgericht Freiburg, HRB 720585  
Geschäftsführer: Dirk Barten,  
Marshall Mohr, Jean-Yves Raimon-  
Dacunha-Castelle, Kara Andersen Reiter

#### France

Intuitive Surgical SAS  
Cité de la Photonique, bâtiment Gienah  
11 avenue de Canteranne  
33600 Pessac, FR  
TVA #: FR 64 417 889 177  
SIREN 417 889 177  
Capital Social 37000€  
RCS Bordeaux Code APE 4646Z

#### United Kingdom

Intuitive Surgical Ltd  
The Schrodinger Building  
Oxford Science Park  
Heatley Rd, Oxford, OX4 4GE, UK  
VAT #: GB943 2213 49  
Company registration  
No 6727762

### Global headquarters

#### USA

Intuitive Surgical, Inc.  
1020 Kifer Road, Building 108  
Sunnyvale, CA 94086-5304  
Tel: +1.408.523.2100

INTUITIVE

